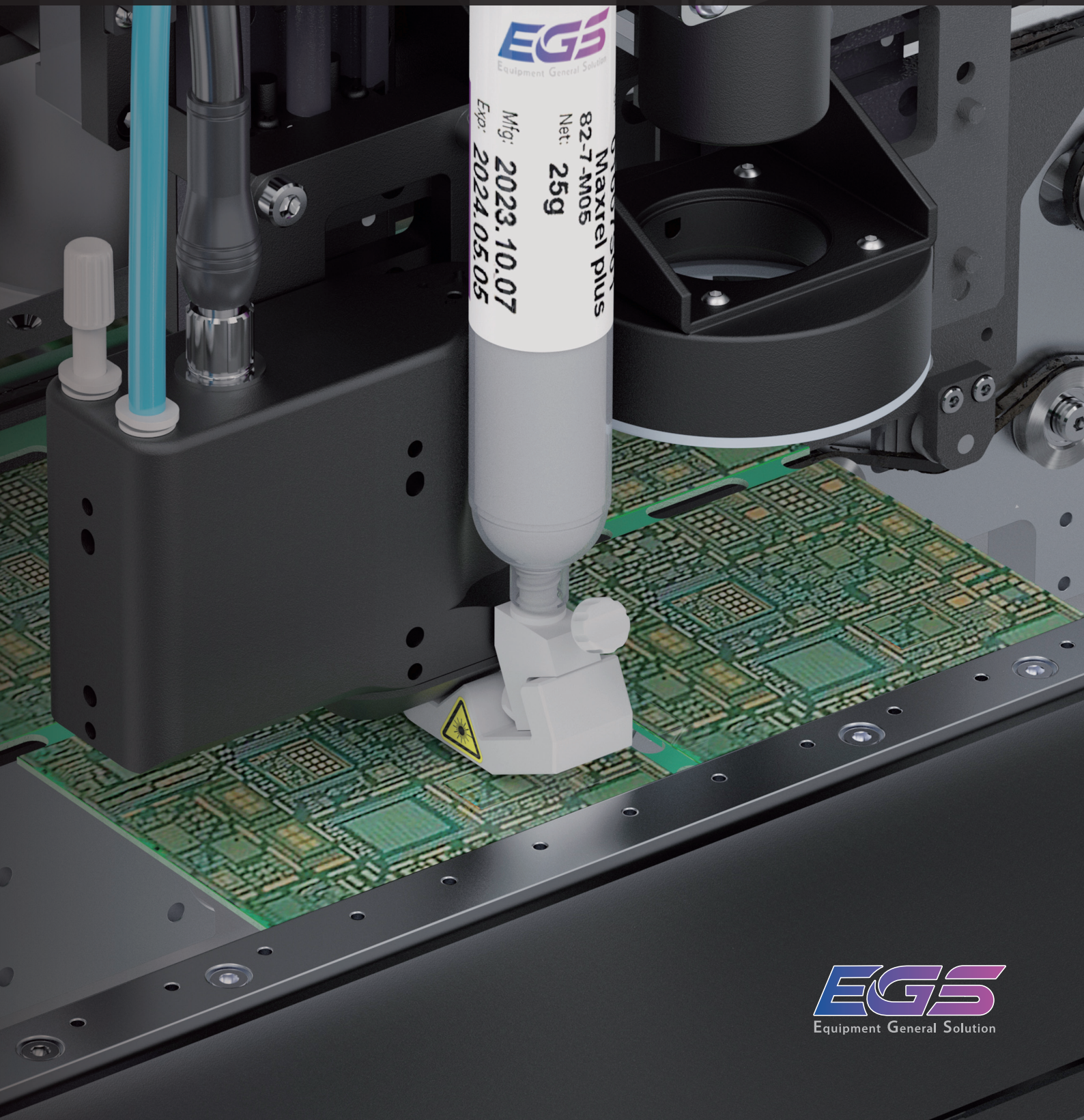


JET PRINTER Series

Ultimate Speed

Perfect Accuracy

Instant Response

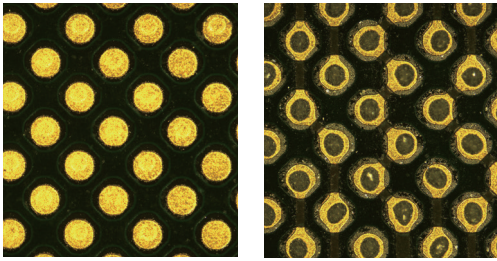




- *MAX Dotting Speed* **500Hz**
- *Minimum Dot Size* **150µm**
- *MAX Speed* **3g, 1500mm/sec**
- *No metal mask required*
- *Accurate JETTING at high speed with anti-vibration design.*
- *Tailored flexibility for diverse industrial applications.*

JET PRINTER Series

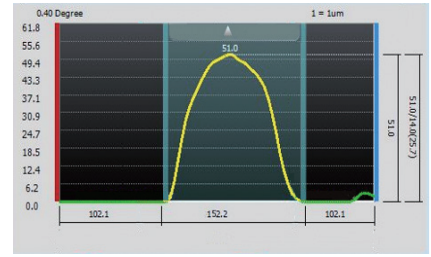
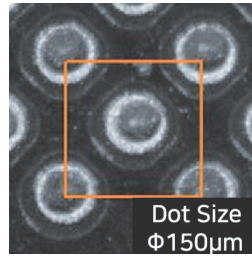
■ Dot Pitch : 500 μm



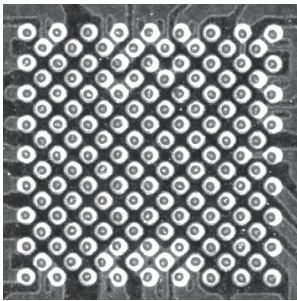
Before Jetting

After Jetting

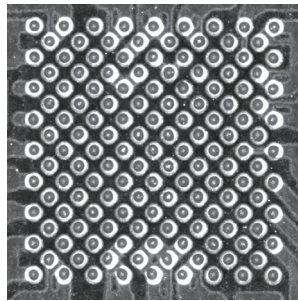
■ The Results Checked with the SPI



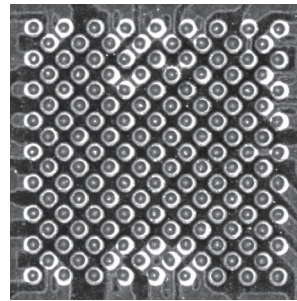
■ Dotting position accuracy test



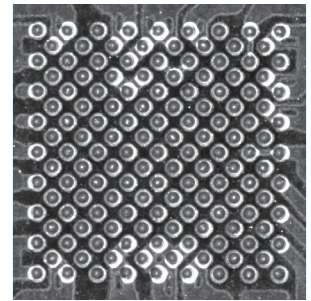
1st



2nd



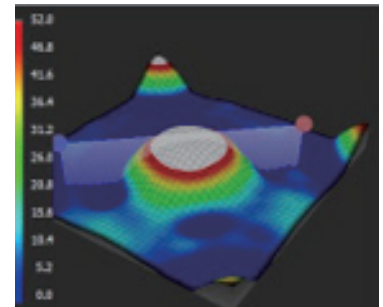
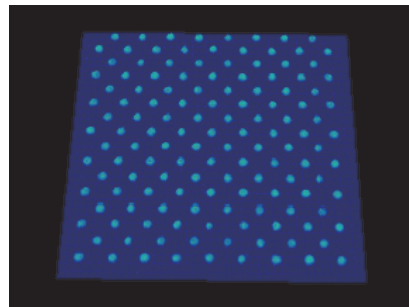
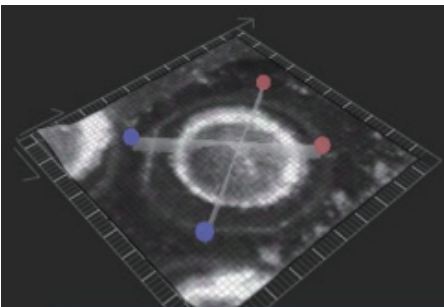
3rd



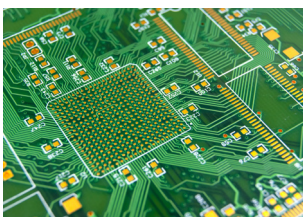
4th

※ 4 dotting tests on the same pad

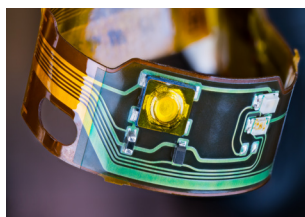
■ 3D AOI Data



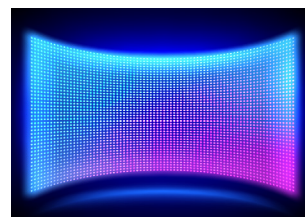
■ Application



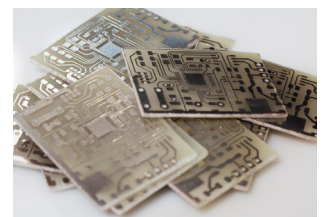
BGA Board



FPCB



Mini LED



CERAMIC PCB

JET PRINTER Series / Dimension



(1200 x 1550 x 1430)



(1400 x 1550 x 1430)



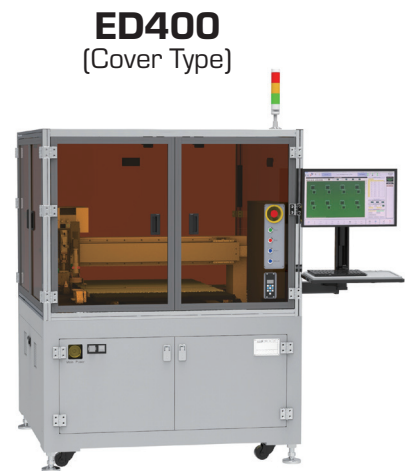
(1640 x 1550 x 1430)



(700 x 1040 x 1300)



(700 x 1040 x 1300)



(1380 x 1230 x 1785)

JET PRINTER Series / Desktop Dispenser Machine Platform

ITEM	ED300 / ED400		
Jet Frequency, Max.	1,800,000 DPH (Dot Per Hour) / 500Hz / Solder paste standard		
Gantry Type	Ball Screw, Servo Motor	Ball Screw, Servo Motor	X/Y Linear Motor
Servo	Advanced DSP Motion Control		
Max. Speed	0.7 m/s		
Position Resolution	10 μm	10 μm	0.2 μm
Active Field of View	16.8 x14.1 mm		
Gantry Repeatability	±20 μm	±20 μm	±3 μm
Power Requirement	1.4kW (Peak)		

* The specification above is based on the installation of the single valve.

JET PRINTER Series

Machine Platform

ITEM	ED100	ED150	ED200
Jet Frequency, Max.	1,800,000 DPH (Dot Per Hour) / 500Hz / Solder paste standard		
Gantry Type	X/Y Linear Motor		
Servo	Advanced DSP Motion Control		
Max. Acceleration	3g		
Position Resolution	0.2 μ m		
Active Field of View	16.8 x 14.1 mm		
Gantry Repeatability	\pm 3 μ m		
Dimension (W x D x H, mm)	1,200 x 1,550 x 1,430	1,400 x 1,550 x 1,430	1,640 x 1,550 x 1,430
Weight	1,800 Kg	2,000 Kg	2,300 Kg
Height Measurement	Laser Analog Sensor		
Voltage	3Phase AC220 \pm 10%, 50/60Hz		
Power Requirement	4kW (Peak)		
Power Consumption	3kVA		
Air Pressure	0.55Mpa ~ 0.75Mpa		
Ambient Temperature	+18°C ~ 32°C, 30 ~ 80% RH		

Board Handling

ITEM	ED 100	ED 150	ED 200
Board Transport Height (mm)	880 ~ 925		
Board Transport Height (SMEMA)	930 ~ 975		
Single Lane Board Size (Without Buffer) (L x W, mm)	410 x 585	640 x 580	850 x 580
Dual Lane Board Size (Without Buffer) (L x W, mm)	410 x 320	640 x 325	850 x 320
Single Lane Board Size (With Buffer) (L x W, mm)	330 x 580	400 x 580	500 x 580
Dual Lane Board Size (With Buffer) (L x W, mm)	330 x 320	400 x 320	500 x 320
2 Step Working Board Size, Max. (L x W, mm)	800 x 580	900 x 580	1,200 x 580
Board Weight, Max.	3kg / 5kg	3kg / 5kg	3kg / 5kg
Minimum Board Size (L x W, mm)	70 x 40		
Board Thickness Range (mm)	0.4 ~ 6.0		
Transport Direction	L \rightarrow R, R \rightarrow L, Bypass		

Capability

Media	Solder Paste	Other Adhesives
Applicator Type	Pneumatic Valve	Piezo Ejector
Min. Dot Diameter	150 μ m	
Syringe Size	5, 10, 30cc	
Single Dot Repeatability / Accuracy	\pm 25 μ m / \pm 35 μ m	

* The specification above is based on the installation of the single valve.

Ultimate Speed
Perfect Accuracy
Instant Response



www.iegs.co.kr



m.youtube.co



EGS Co., Ltd.

Tel | +82-41-906-5135 Fax | +82-41-906-5136

Add. | S-212, 10, Baekseokgongdan 1-ro, Seobuk-gu, Cheonan-si, Chungcheongnam-do, Republic of Korea (31094)

Sales E-mail | sales@iegs.co.kr Website | www.iegs.co.kr