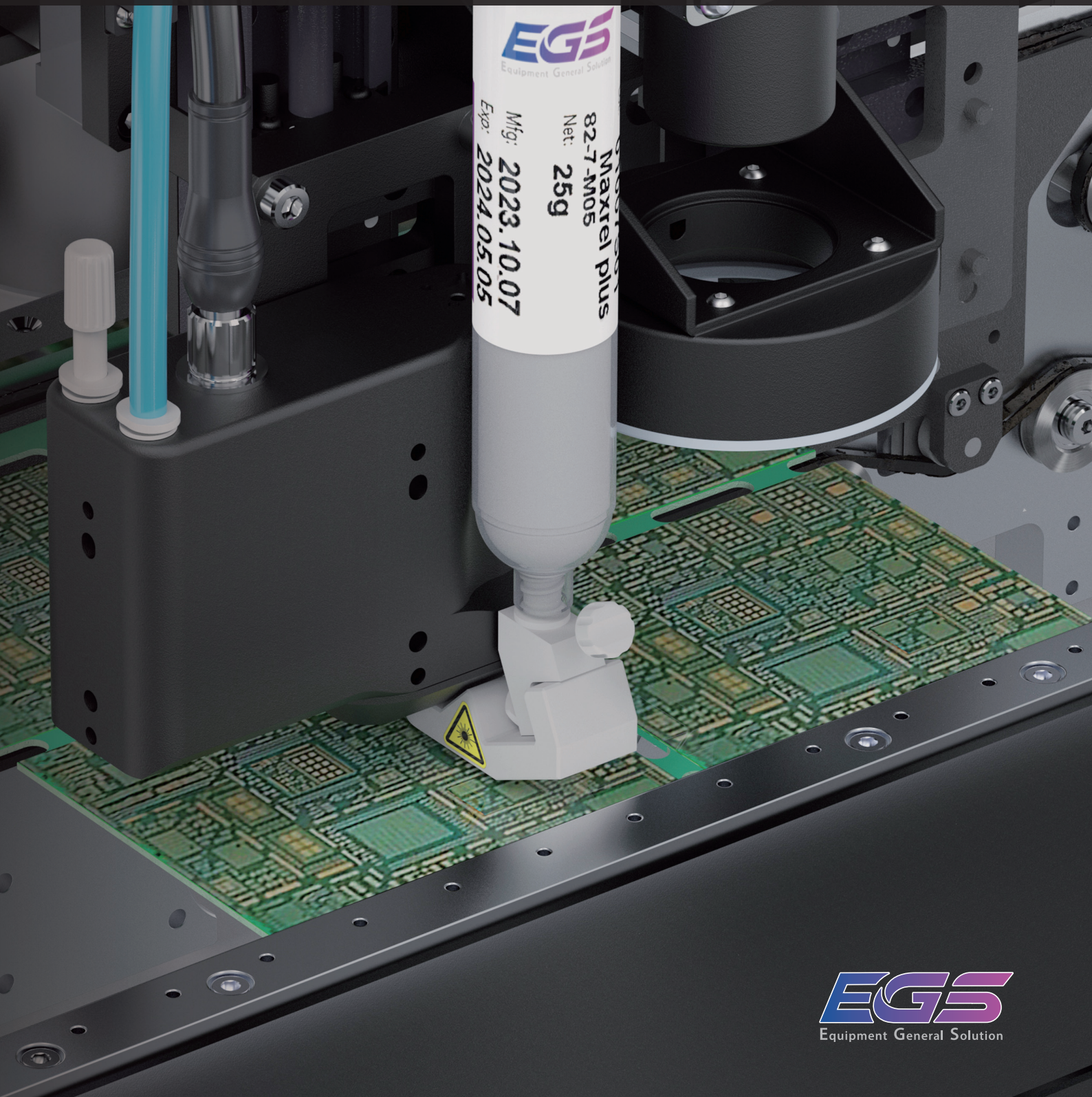


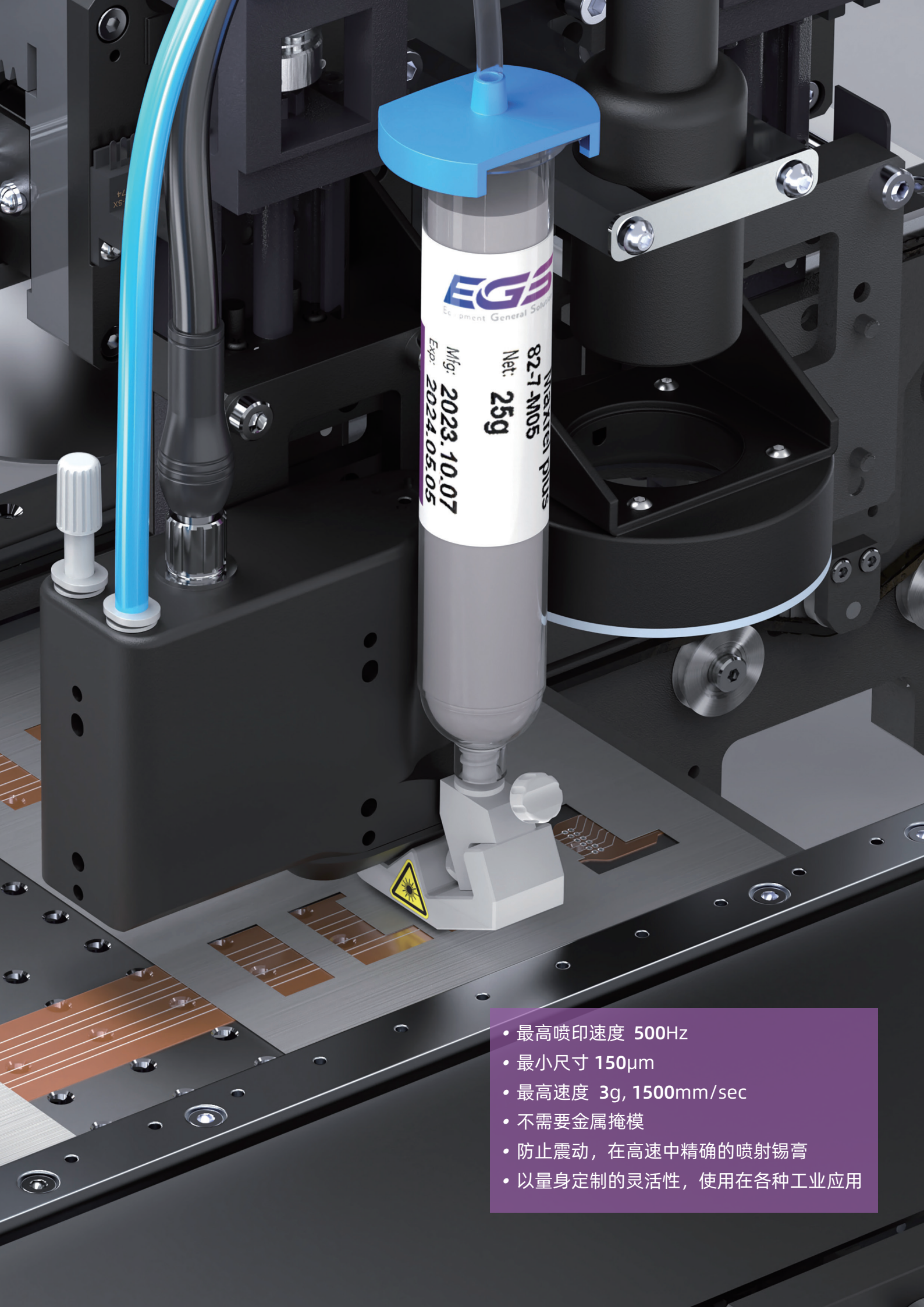
# JET PRINTER Series

Ultimate Speed

Perfect Accuracy

Instant Response





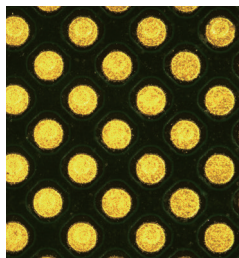
**EGE**  
Equipment General Solutions

Net: **25g**  
82-71-M05  
Mfg: **2023.10.07**  
Exp: **2024.05.05**

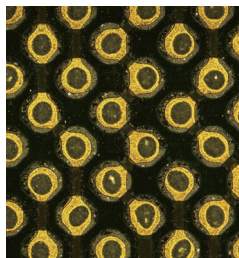
- 最高喷印速度 500Hz
- 最小尺寸 150 $\mu$ m
- 最高速度 3g, 1500mm/sec
- 不需要金属掩模
- 防止震动, 在高速中精确的喷射锡膏
- 以量身定制的灵活性, 使用在各种工业应用

# JET PRINTER Series

## ■ 点距 : 500 $\mu\text{m}$

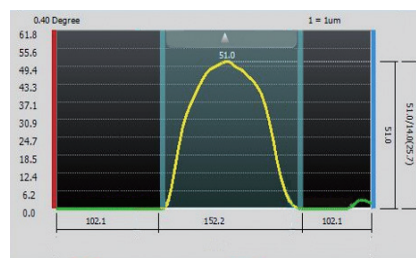
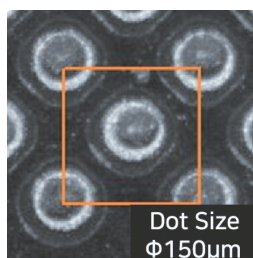


喷射前

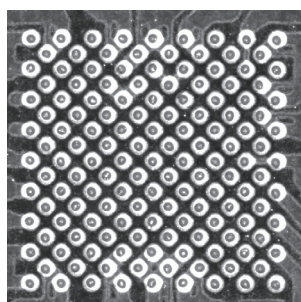


喷射后

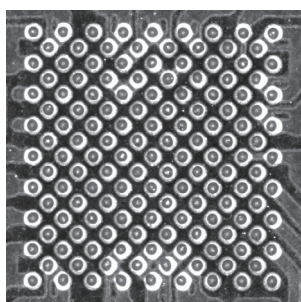
## ■ SPI 检查的结果



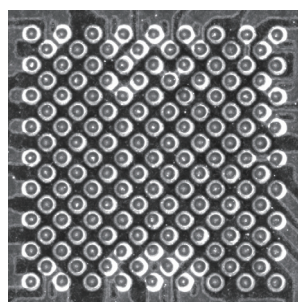
## ■ 喷射位置精度测试



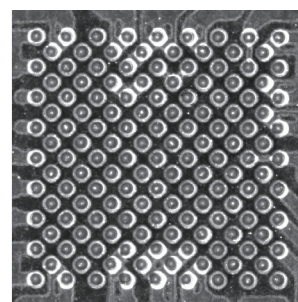
1st



2nd



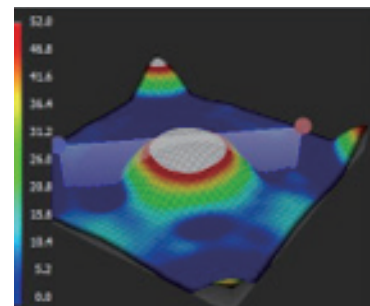
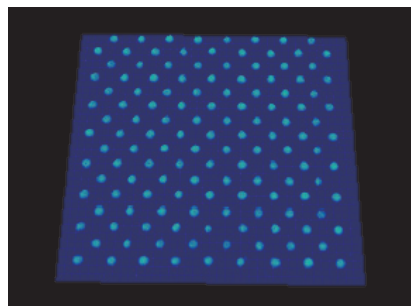
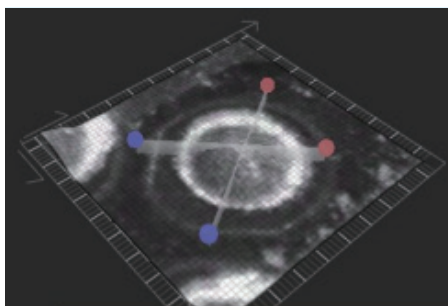
3rd



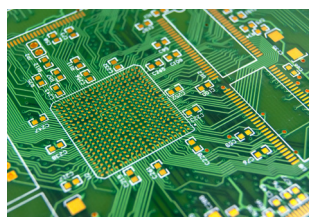
4th

※ 在同一位置上喷射4次

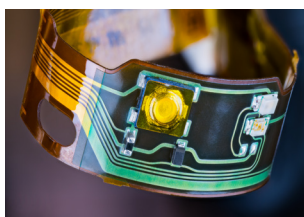
## ■ 3D AOI 数据



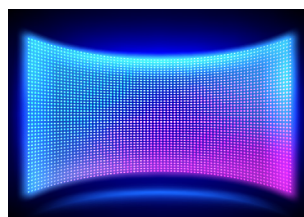
## ■ 应用



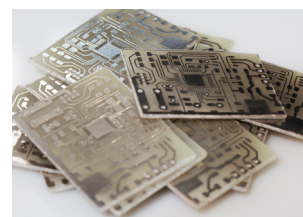
BGA Board



FPCB



Mini LED



CERAMIC PCB

## JET PRINTER Series / 尺寸



(1200 x 1550 x 1430)



(1400 x 1550 x 1430)



(1640 x 1550 x 1430)

**ED300**  
(滚珠螺杆型)



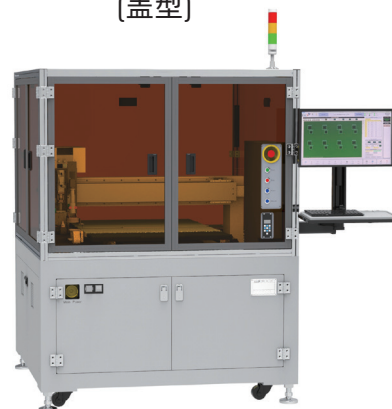
(700 x 1040 x 1300)

**ED300**  
(线性显示器型)



(700 x 1040 x 1300)

**ED400**  
(盖型)



(1380 x 1230 x 1785)

## JET PRINTER Series / 台式喷锡器 Machine Platform

项目	ED300 / ED400		
最高频率	1,800,000 DPH (Dot Per Hour) / 500Hz / Solder paste standard		
龙门架	Ball Screw, Servo Motor	Ball Screw, Servo Motor	X/Y Linear Motor
伺服系统	Advanced DSP Motion Control		
最高速度	0.7 m/s		
位置分辨率	10 μm	10 μm	0.2 μm
活动视野	16.8 x 14.1 mm		
重复性	±20 μm	±20 μm	±3 μm
功率要求	1.4kW (Peak)		

\* 以上规格以单阀安装为准。

# JET PRINTER Series

## 设备平台

项目	ED100	ED150	ED200
最高频率	1,800,000 DPH (Dot Per Hour) / 500Hz / Solder paste standard		
龙门架	X/Y Linear Motor		
伺服系统	Advanced DSP Motion Control		
最大加速	3g		
位置分辨率	0.2 $\mu$ m		
活动视野	16.8 x 14.1 mm		
重复性	$\pm$ 3 $\mu$ m		
尺寸 (W x D x H, mm)	1,200 x 1,550 x 1,430	1,400 x 1,550 x 1,430	1,640 x 1,550 x 1,430
重量	1,800 Kg	2,000 Kg	2,300 Kg
高度测量	Laser Analog Sensor		
电压	3Phase AC220 $\pm$ 10%, 50/60Hz		
功率要求	4kW (Peak)		
功耗	3kVA		
空气压力	0.55Mpa ~ 0.75Mpa		
环境温度	+18°C ~ 32°C, 30 ~ 80% RH		

## 基板搬运

项目	ED 100	ED 150	ED 200
基板搬运高度 (mm)	880 ~ 925		
基板搬运高度 (SMEMA)	930 ~ 975		
单轨道基板尺寸 (Without Buffer) [L x W, mm]	410 x 585	640 x 580	850 x 580
双轨道基板尺寸 (Without Buffer) [L x W, mm]	410 x 320	640 x 325	850 x 320
单轨道基板尺寸 (With Buffer) [L x W, mm]	330 x 580	400 x 580	500 x 580
双轨道基板尺寸 (With Buffer) [L x W, mm]	330 x 320	400 x 320	500 x 320
两步操作基板尺寸 [L x W, mm] kg	800 x 580	900 x 580	1,200 x 580
基板重量 [kg]	3kg / 5kg	3kg / 5kg	3kg / 5kg
最小基板尺寸 [L x W, mm]	70 x 40		
基板厚度范围 [mm]	0.4 ~ 6.0		
传送方向	L $\rightarrow$ R, R $\rightarrow$ L, Bypass		

## 能力

Media	锡膏	其他粘合剂
涂抹料类型	气动阀	压电喷射器
最小网点直径	150 $\mu$ m	
锡膏管尺寸	5, 10, 30cc	
单点重复性 / 准确	$\pm$ 25 $\mu$ m / $\pm$ 35 $\mu$ m	

\* 以上规格以单阀安装为准。

**Ultimate Speed**  
**Perfect Accuracy**  
**Instant Response**



[www.iegs.co.kr](http://www.iegs.co.kr)



[m.youtube.co](http://m.youtube.co)



**EGS Co., Ltd.**

Tel | +82-41-906-5135 Fax | +82-41-906-5136

Add. | S-212, 10, Baekseokgongdan 1-ro, Seobuk-gu, Cheonan-si, Chungcheongnam-do, Republic of Korea (31094)

Sales E-mail | [sales@iegs.co.kr](mailto:sales@iegs.co.kr) Website | [www.iegs.co.kr](http://www.iegs.co.kr)